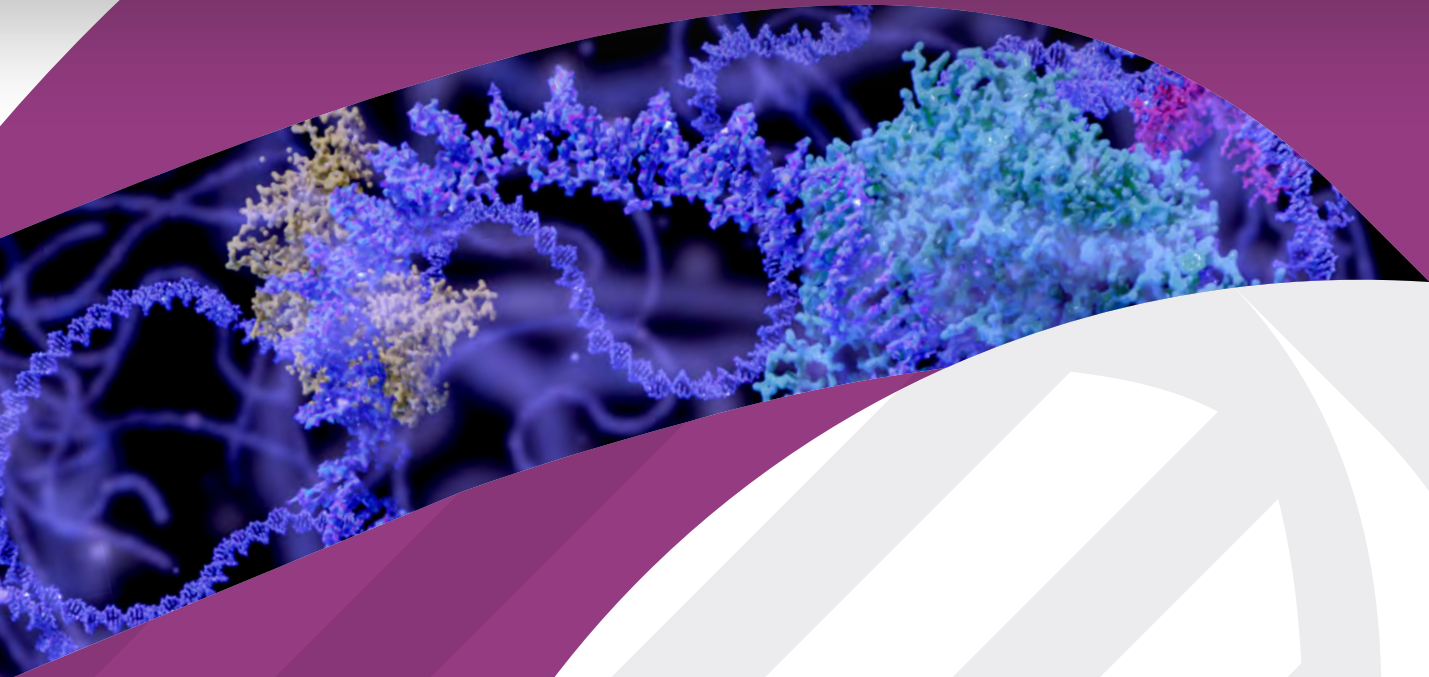




# mRNA

SYNTHESIS WITH MULTI-SCALE PRODUCTION



**Getting you  
to the answer.  
Faster.**

**Aldevron makes high quality  
mRNA supporting:**

Protein Replacement Therapy

Cancer Immunotherapy

Genetic Reprogramming

Infectious Disease Vaccines

Genome Engineering

Allergy Vaccines

Gene Editing

Regenerative Therapies



# Aldevron makes the highest quality biologics.

Aldevron makes mRNA for the most demanding applications. We build trust and confidence through open communication and focused teams that have your end goals in mind. With mRNA manufactured by Aldevron, advance with confidence into and beyond your clinical stages of development.

## mRNA Supports

Aldevron mRNA services support these types of projects and we can also customize to your needs.

- Protein Replacement Therapy
- Cancer Immunotherapy
- Genetic Reprogramming
- Infectious Disease Vaccines
- Genome Engineering
- Allergy Vaccines
- Gene Editing
- Regenerative Therapies

## Capabilities

The Aldevron advantage for mRNA manufacture includes the in-house production of the DNA template and IVT (*in vitro* transcription) enzymes under the best quality levels, all in a single production process under one roof.

Our mRNA services Offer:

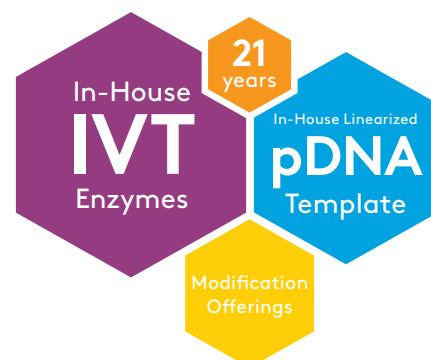
- Support for a wide range of mRNA configurations
- Supercoiled & Linearized pDNA manufacture
- IVT enzyme manufacture
- Modification Offerings
  - Capping
  - Tailing
  - Modified Bases
- Process Development
- Customizable QC Panels

## Capacity

Aldevron uses a scalable manufacturing process, delivering milligram to multigram quantities for research through commercial uses.

Our facility is the most advanced of its kind, offering unparalleled capacity. Some of the highlights include:

- Four production trains across 32 suites.
- 17,000 square feet of state-of-the-art modular clean-rooms with single-pass air cell banking, inoculation and fill/finish.
- Advanced, independent air-handling system, unidirectional personnel flow and airlocks within the cGMP area.
- Supporting areas: climate-controlled warehouse, quality control testing laboratory, large interior mezzanine for validated utilities.
- Multiple DNA template growth scales, flowing directly into *in vitro* mRNA manufacture:
  - Shake Flask
  - 10L
  - 30L
  - 300L
  - 2000L (Expansion Available)





We have extensive experience manufacturing high quality biologics, and we exclusively offer Research grade, GMP-Source™ and cGMP service tailored to each stage of your product development through commercialization.

The Aldevron Process	Research Grade	GMP-Source™	cGMP
Flexible entry points	✓	✓	✓
Gene synthesis and cloning	✓	✓	✓
pDNA preparation & linearization	✓	✓	✓
<i>In vitro</i> transcription	✓	✓	✓
Proprietary purification process	✓	✓	✓
Certificate of Analysis (CoA)	✓	✓	✓
Qualified master cell bank generation		✓	✓
Manufacturing summary report		✓	✓
TSE/BSE statement		✓	✓
Validated QA oversight		✓	✓
Development/engineering work prior to banking/growth			✓
Validated change control system			✓
Product specific master batch records			✓
Process control			✓
Option for client-transferred manufacturing process			✓
Our flexible and fit-for-purpose approach delivers results customized for your exact needs.	Quickest option for high quality mRNA DNA	Faster-cost effective cGMP alternative	Highest level of quality and customization

## Contact us about Aldevron's mRNA Services

4055 41<sup>st</sup> Street South, Fargo, ND 58104 USA

+1 (701) 297-9256 Toll-free (U.S. and Canada): +1 (877) 787-3362

Additional facilities in Madison, WI and Freiburg, Germany

Visit: [Aldevron.com/contact](http://Aldevron.com/contact)



For the last 21 years, Aldevron has been a proud partner of research laboratories through the production of:

- Plasmid DNA at any scale, with fast turnaround times
- Proteins in bacterial, insect and mammalian expression systems
- mRNA to your specifications using a robust and scalable process
- Antibody discovery utilizing our genetic immunization technology

Aldevron supports research-use production through commercialization.